



Indiana State Department of Health

WEEKLY INFLUENZA REPORT

Data as of Wednesday, May 8, 2013

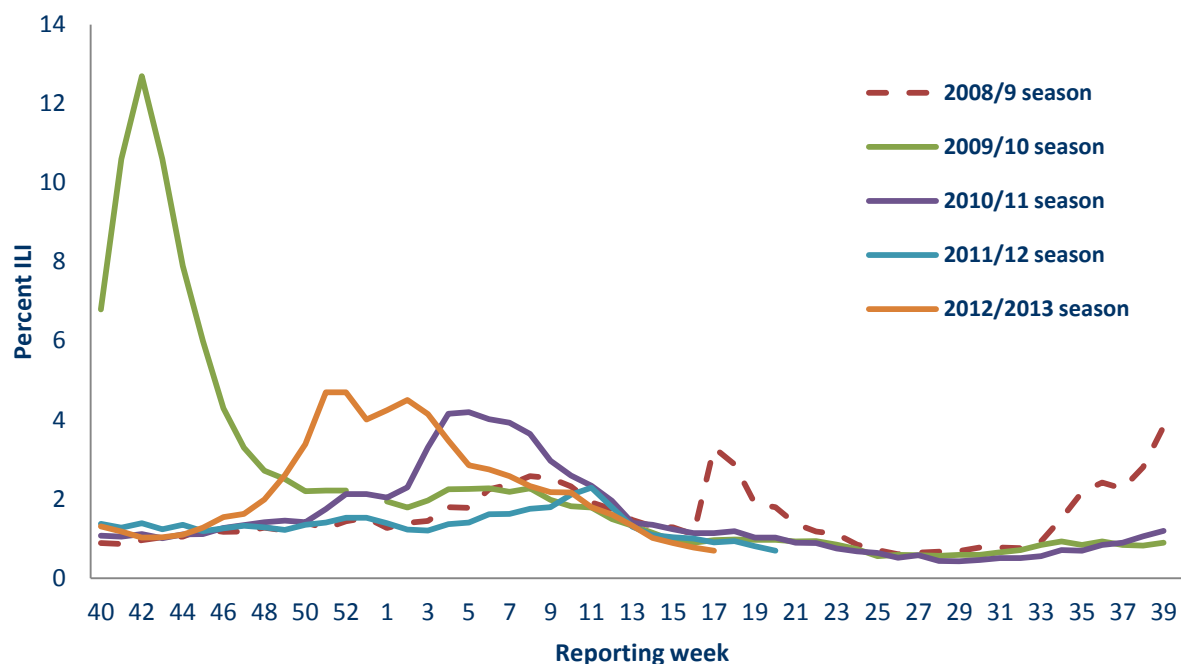
The following report is meant to provide local health departments, hospital administrators, health professionals and residents with a general understanding of the burden of influenza-like illness (ILI). Data from several surveillance programs were utilized to produce this report and all information is provisional. ***Data may change as information is received, reviewed and verified. The purpose of this report is to report in a timely manner what is occurring or has recently occurred.*** For further information about the data presented in this report, please call the ISDH Surveillance and Investigation Division at 317-233-7125.

The ISDH has developed a website exclusively for the Influenza A H7N9 situation and is located at <http://bit.ly/10G6800>

Key Points:

- The percentage of ILI reported by the emergency department surveillance (ED) system was (.7%) and the sentinel surveillance system was (.27%) . Sporadic activity was reported to the CDC.
- During week 18, 82% (14/17) specimen was identified by the ISDH lab as positive for influenza. Ten were positive for 2009 A/H1N1 pdm virus and four were positive for Influenza A/H3.
- All physicians, laboratories and hospitals are to report influenza-associated deaths to local health department within 72 hours of knowledge of death.
- One influenza-associated death was officially reported during this reporting week.
- A total of 72 influenza deaths have been reported and have had a positive influenza test for the 2012/2013 season. Five are under 18 years of age.
- The ISDH does not report the number of deaths in each county until five deaths have occurred in a specific county. Marion County has reported 12 deaths, Hamilton County has reported 6 deaths, and Lake County has reported 5 deaths.
- Twenty eight of the reported deaths were vaccinated with a 2012/2013 influenza vaccine. The vaccination status was unknown for twenty six cases, and eighteen were documented as unvaccinated.
- Sixty seven of the deaths had underlying medical conditions. Five deaths did not indicate there were underlying medical conditions. The most commonly reported underlying medical conditions were Cardiac Disease, COPD, Diabetes, Asthma and Renal Disease and Cancer.
- The most common complication reported during acute illness was acute respiratory distress syndrome and pneumonia. Other complications collected on the reports were shock, altered mental status, sepsis, dehydration, pulmonary hemorrhage and urinary tract infection.

Percent of patients who presented at an emergency department (ED) with a chief complaint relating to influenza-like illness – Indiana, 2012/2013, 2011/12, 2010/2009, 2009/10, 2008/9 seasons (EDs currently reporting = 115)



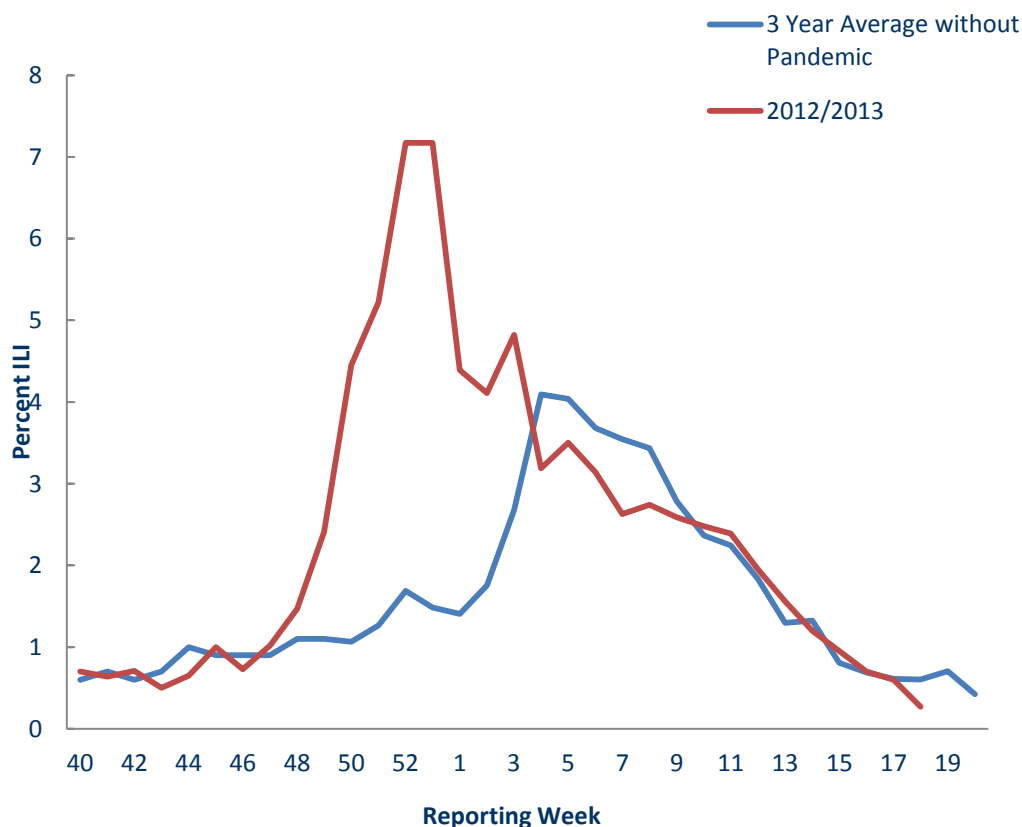
**Data obtained from the ISDH Public Health Emergency Surveillance System (PHESS).*

Sentinel reported influenza-like illness by sentinel type and reporting week with number of reporting sites Indiana, 2012/13 season.*

Reporting Week	All Reporters %ILI	Universities %ILI	Non-Universities %ILI
Week 18	.27	.14	.32
Week 17	.60	.70	.56
Week 16	.77	.48	.90

**Data obtained from the ISDH Sentinel Influenza Surveillance System. This data is subject to change as sentinel sites can back-date their weekly reports.*

Percent of patients who presented at sentinel provider clinics with symptoms relating to influenza-like illness – Indiana, and a three year baseline average, 2009/2010 season excluded due to the pandemic*†
 (Number of sentinel provider clinics who reported this week = 32)



*Data obtained from the ISDH Sentinel Influenza Surveillance System.

† Sentinel data has limited timeliness, so the data reported is for the week before the most current week.

This data is subject to change as sentinel sites can back-date their weekly reports.

ISDH Laboratory data regarding circulating influenza viruses – Indiana, 2012/13 influenza season.*

PCR Result	This week's total		2013 total	
	Number	Percent of specimens received	Number	Percent of specimens received
2009 A/H1N1pdm virus	10	58.8%	32	4.0%
Influenza A/H3 seasonal virus	4	23.5%	407	50.7%
Influenza A/H1 seasonal virus	0	0%	0	0%
Influenza B seasonal virus	0	0%	105	13.1%
Influenza negative	3	17.6%	228	28.4%
Inconclusive	0	0%	7	<1.0%
Unsatisfactory specimen†	0	0%	18	2.2%

Influenza Co-infection^Δ	0	0%	5	<1.0%
Total	17	100%	802	100%

^Δ All co-infections have been influenza A/H3 and influenza B.

^{*}Data obtained from the ISDH Laboratory via specimens submitted from the ISDH Sentinel Influenza Surveillance System and IN Sentinel Laboratories.

[†]Unsatisfactory specimens include specimens that leaked in transit, were too long in transit, or were inappropriately labeled.

OTHER CIRCULATING VIRUSES RECENTLY IDENTIFIED BY THE ISDH LABORATORY:

Other Respiratory Viruses	This Week	2013 Total (Since Oct. 1, 2012)	Early Surveillance (Sept 1-30, 2012)
Adenovirus	0	4	1
Coxsackie A Virus	0	0	0
Coxsackie B Virus	0	0	0
Echovirus	0	0	0
Enterovirus NOS	0	3	1
Parainfluenza 1 Virus	0	1	1
Parainfluenza 2 Virus	0	4	1
Parainfluenza 3 Virus	0	1	2
Rhinovirus	0	0	1
Human Metapneumovirus	0	0	0
Respiratory Syncytial Virus	1	15	1
Total	1	28	8

Sentinel reported influenza-like illness (ILI) by age category for the most current week reported – Indiana, 2012-13 season.

Age category (yrs)	Total number with ILI	Percent with ILI
0–4	5	23
5 –24	8	38
25–49	6	29
50–64	2	10
65+	0	0
Total	21	100

^{*}Data obtained from the ISDH Sentinel Influenza Surveillance System.

^{*}Sentinel data has limited timeliness, so the data reported is for the week before the most current week. This data is subject to change as sentinel sites can back-date their weekly reports.

Sentinel and ED influenza-like illness percentages by reporting week Indiana, 2012/13 season.

Reporting Week	ED Surveillance %ILI	Sentinel Surveillance %ILI
Week 18	.7	.27
Week 17	.78	.60
Week 16	.89	.77

**Number of 2012/2013 reported deaths associated with laboratory confirmed influenza, by age category
Indiana, May 08, 2013**

	Age category (yrs)	Total number this week	Season Total
Number of deaths associated with influenza	0-4	0	1
	5-18	0	4
	19-24	0	0
	25-49	0	6
	50-64	1	10
	65+	0	51
	Unknown	0	0
	Total	1	72

This data is subject to change as information is updated, revised or corrected.

Number of schools (K-12) reporting a 20% or more absenteeism rate – Indiana, 2012/13 school year*

Health District†	Current Week	Total
1	0	0
2	0	0
3	0	1
4	0	1
5	0	1
6	0	0
7	0	0
8	0	0
9	0	0
10	0	0
Total	0	3